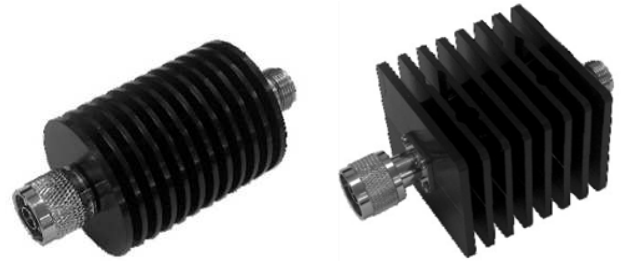


CR-ATN10 Series
10W Attenuators
Key Features

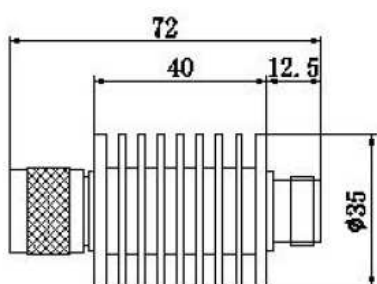
- Support frequency range from 0 to 6GHz
- High power capacity
- Compact design, small size and light weight
- Customizable products are available


Specifications

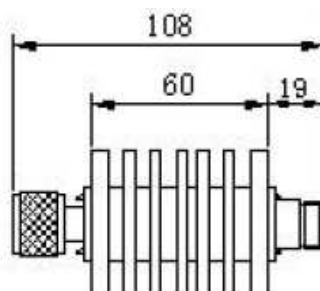
| Models | CR-ATN10-**-3N (Indoor) CR-ATN10-**-3NR (Outdoor) (1-30dB Attenuating Value) | CR-ATN10-**-6N (Indoor) CR-ATN10-**-6NR (Outdoor) (1-30dB Attenuating Value) |
|-----------------------|--|--|
| Attenuating Value | 1-30dB | |
| Frequency | 0-3GHz | 0-6GHz |
| Power Capacity | 10W | |
| VSWR | <1.2 | <1.3 |
| Attenuation Tolerance | 1-10dB ± 0.6 dB 11-20dB ± 0.8 dB | 21-30dB ± 1.0 dB |
| Impedance | 50 Ω | |
| RF Connection | N-F/M (SMA, DIN, BNC option) | |
| Temperature Range | -40- +50 $^{\circ}$ C | |
| Size | $\Phi 35 \times 72$ mm (or $60 \times 60 \times 50$ mm) | |
| Weight | 135g (307g) | |

Model

| Models | PIM Value | |
|---------------------------------------|---------------------------------------|-------------------|
| CR-ATN10-**-3N-C CR-ATN10-**-3NR-C | CR-ATN10-**-6N-C CR-ATN10-**-6NR-C | -100dBc-- -110dBc |
| CR-ATN10-**-3N-B CR-ATN10-**-3NR-B | CR-ATN10-**-6N-B CR-ATN10-**-6NR-B | -120dBc-- -130dBc |
| CR-ATN10-**-3N-A CR-ATN10-**-3NR-A | CR-ATN10-**-6N-A CR-ATN10-**-6NR-A | Less than -140dBc |



尺寸单位 (dimension): mm



尺寸单位 (dimension): mm

